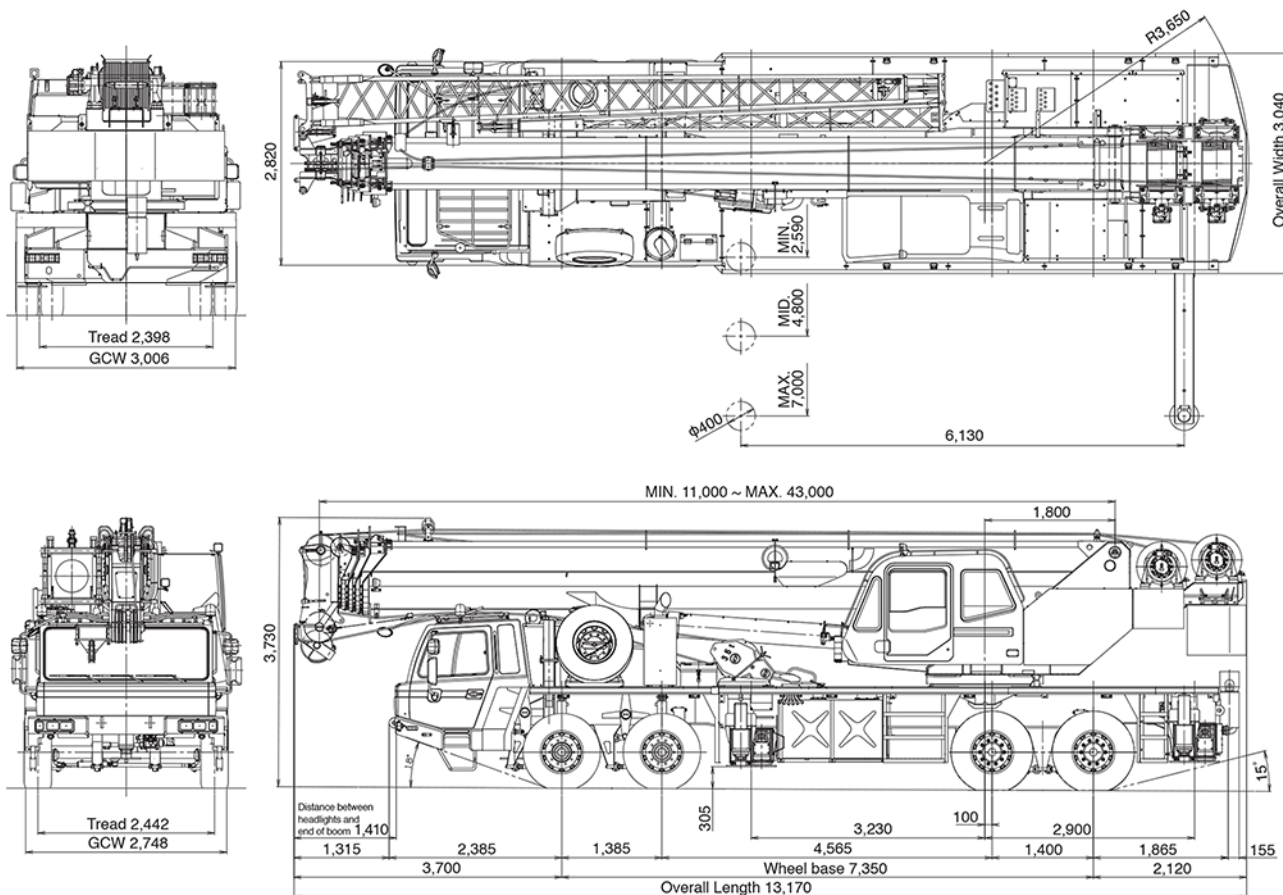


# STEWART & SONS STEEL

## GT-600EX DIMENSIONS

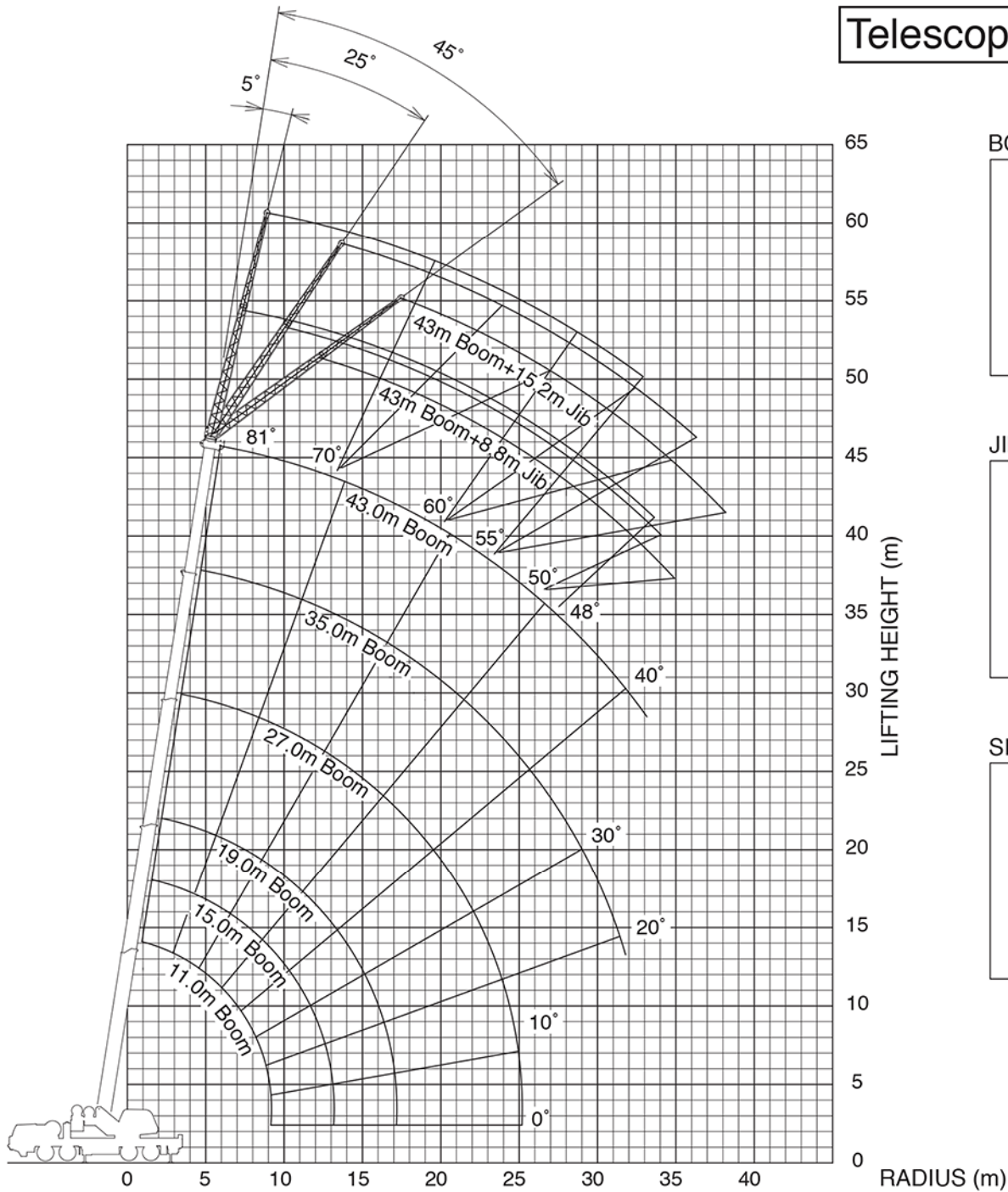


# DIMENSIONS

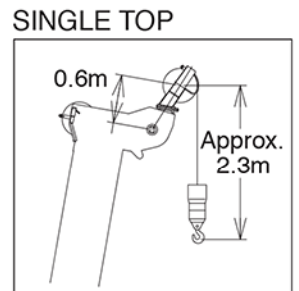
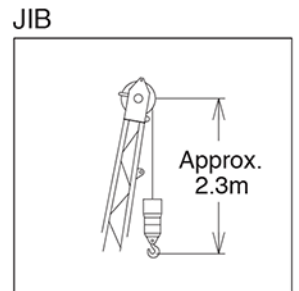
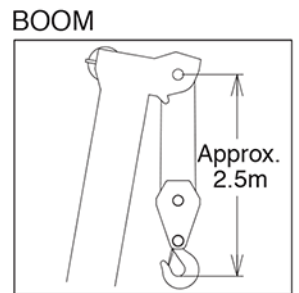
GT-600EX TADANO



**RANGE DIAGRAM - ALL LIFT CONFIGURATIONS**



Telescoping mode I



**WORKING RANGES**  
GT-600EX TADANO

## MAIN BOOM

Outriggers fully extended 7.0m													(UNIT:x1000kg)							
B	A		11.0m		15.0m		19.0m		27.0m		35.0m		39.0m		43.0m					
	C		C		C		C		C		C		C		C					
3.0	70	60.0	76	40.8	79	32.0	79	22.0												
3.5	67	47.5	74	40.8	78	32.0	78	22.0												
4.0	64	42.4	72	40.8	76	32.0	76	22.0	81	22.0	81	17.0								
4.5	61	38.1	70	37.8	75	32.0	75	22.0	80	22.0	80	17.0								
5.0	58	34.5	68	34.2	73	32.0	73	22.0	79	22.0	79	17.0								
5.5	55	31.4	66	31.1	72	30.9	71	21.4	78	21.3	78	17.0								
6.0	51	28.7	63	28.4	70	27.4	70	20.6	77	20.7	77	17.0	80	14.0	81	12.0				
6.5	47	26.4	61	26.1	68	24.0	68	19.8	76	20.0	76	16.3	80	14.0	80	12.0				
7.0	43	24.4	59	23.5	67	21.1	66	19.1	75	19.5	75	15.4	79	14.0	79	11.9	80	10.0		
7.5	39	22.7	57	20.9	65	18.8	65	18.5	74	18.8	73	14.6	78	13.5	78	11.5	80	10.0		
8.0	34	20.0	54	18.7	63	16.9	63	17.9	72	17.1	72	13.9	77	13.0	77	11.1	79	10.0	80	8.5
9.0	20	15.7	49	15.0	60	13.9	60	16.8	70	14.3	70	12.6	76	12.1	76	10.3	78	10.0	79	8.5
10.0			43	12.0	56	11.6	56	14.7	68	12.2	68	11.6	74	11.7	74	9.7	76	9.7	78	8.5
11.0			36	9.8	52	9.5	52	12.4	65	10.5	65	10.7	72	10.2	72	9.0	75	9.2	77	8.5
12.0			28	8.2	47	7.9	48	10.6	63	9.2	63	9.9	70	9.0	71	8.4	73	8.7	76	8.1
14.0					37	5.5	38	7.9	58	6.9	58	8.3	67	7.1	67	7.3	70	7.5	73	6.9
16.0					24	3.8	25	6.2	52	5.2	52	6.5	63	5.6	63	6.4	67	6.1	70	5.5
18.0									46	3.9	46	5.2	59	4.4	59	5.4	63	5.0	66	4.4
20.0									39	3.0	40	4.2	55	3.5	55	4.4	60	4.0	63	3.6
22.0									31	2.2	32	3.5	50	2.7	51	3.6	56	3.2	60	2.9
24.0									20	1.6	22	2.9	46	2.1	46	3.0	52	2.6	57	2.3
26.0													41	1.6	41	2.5	48	2.1	53	1.8
28.0													35	1.2	35	2.1	43	1.7	50	1.4
30.0													28	0.8	28	1.7	39	1.3	46	1.0
32.0													18	0.5	18	1.4	33	1.0	42	0.7
34.0																	26	0.8	37	0.5
36.0																	17	0.6		
D							0°						18°	0°		17°				37°
Telescoping conditions(%)																				
Telescoping Mode	I, II	I	I	II	I	II	I	II	I	II	I	II	I	II	I, II					
2nd boom	0	50	100	0	100	0	100	0	100	0	100	0	50	100						
3rd boom	0	0	0	33	33	66	66	100	100	100										
4th boom	0	0	0	33	33	66	66	100	100	100										
Top boom	0	0	0	33	33	66	66	100	100	100										

A = Boom length (m)

B = Load radius (m)

C = Loaded boom angle (°)

D = Minimum boom angle (°) for indicated length (no load)

# LOAD CHART

## GT-600EX TADANO

# STEWART & SONS STEEL

## MAIN BOOM + FLY JIB

Outriggers fully extended 7.0m							(UNIT:x1000kg)						
C	43.0m Boom + 8.8m Jib						C	43.0m Boom + 15.2m Jib					
	5°Tilt		25°Tilt		45°Tilt			5°Tilt		25°Tilt		45°Tilt	
	R	W	R	W	R	W		R	W	R	W	R	W
81°	9.2	4.00	12.2	3.58	14.1	2.47	81°	11.3	2.60	16.2	1.69	19.5	1.17
80°	10.2	4.00	13.3	3.50	15.1	2.44	80°	12.5	2.60	17.4	1.65	20.6	1.15
79°	11.3	4.00	14.2	3.42	15.9	2.40	79°	13.6	2.60	18.4	1.61	21.5	1.13
78°	12.3	4.00	15.1	3.32	16.8	2.37	78°	14.8	2.60	19.5	1.58	22.4	1.12
77°	13.3	4.00	16.0	3.22	17.6	2.34	77°	15.9	2.56	20.4	1.54	23.4	1.10
76°	14.2	3.85	16.9	3.12	18.5	2.32	76°	17.0	2.46	21.5	1.51	24.3	1.09
75°	15.2	3.72	17.7	3.04	19.3	2.29	75°	18.1	2.38	22.4	1.48	25.2	1.08
73°	17.0	3.50	19.5	2.88	21.0	2.24	73°	20.1	2.22	24.3	1.43	27.0	1.05
70°	19.5	3.20	22.0	2.68	23.3	2.18	70°	23.0	2.01	27.2	1.35	29.4	1.02
68°	21.4	3.03	23.6	2.56	24.8	2.14	68°	25.1	1.90	29.0	1.31	31.1	1.00
65°	23.7	2.52	25.9	2.25	27.0	2.09	65°	27.8	1.75	31.8	1.25	33.5	0.98
63°	25.1	2.13	27.2	1.92	28.4	1.86	63°	29.5	1.52	33.3	1.21	35.1	0.97
60°	27.3	1.66	29.3	1.52	30.4	1.48	60°	31.8	1.14	35.7	0.99	37.1	0.95
58°	28.8	1.40	30.7	1.28	31.7	1.24	58°	33.4	0.92	37.0	0.81	38.2	0.77
55°	30.9	1.07	32.7	0.96	33.4	0.93	55°	35.7	0.66	39.1	0.56	40.1	0.53
53°	32.2	0.86	33.9	0.77	34.6	0.75							
50°	34.1	0.58	35.7	0.52	36.4	0.51							
48°	35.3	0.43											

Outriggers fully extended 7.0m							(UNIT:x1000kg)						
C	39.0m Boom (telescoping mode II) + 8.8m Jib						C	39.0m Boom (telescoping mode II) + 15.2m Jib					
	5°Tilt		25°Tilt		45°Tilt			5°Tilt		25°Tilt		45°Tilt	
	R	W	R	W	R	W		R	W	R	W	R	W
81°	8.1	4.40	11.0	3.58	13.0	2.47	81°	10.2	2.60	15.0	1.69	18.3	1.17
80°	9.0	4.40	11.9	3.50	13.8	2.44	80°	11.3	2.60	16.0	1.65	19.3	1.15
79°	9.9	4.40	12.8	3.42	14.7	2.40	79°	12.3	2.60	16.9	1.61	20.2	1.13
78°	10.9	4.40	13.7	3.35	15.5	2.37	78°	13.4	2.60	17.9	1.58	21.0	1.12
77°	11.8	4.40	14.5	3.28	16.3	2.34	77°	14.4	2.56	18.8	1.54	21.9	1.10
76°	12.6	4.24	15.3	3.21	17.1	2.32	76°	15.4	2.46	19.8	1.51	22.7	1.09
75°	13.5	4.09	16.1	3.15	17.8	2.29	75°	16.3	2.38	20.7	1.48	23.5	1.08
73°	15.1	3.85	17.8	3.04	19.3	2.24	73°	18.2	2.22	22.5	1.43	25.1	1.05
70°	17.6	3.51	20.1	2.89	21.5	2.18	70°	20.9	2.01	25.1	1.35	27.4	1.02
68°	19.2	3.32	21.7	2.78	22.8	2.14	68°	22.7	1.90	26.8	1.31	28.9	1.00
65°	21.5	3.07	23.8	2.61	24.8	2.09	65°	25.3	1.75	29.1	1.25	31.0	0.98
63°	23.0	2.93	25.2	2.52	26.2	2.07	63°	27.0	1.67	30.8	1.21	32.4	0.97
60°	25.1	2.58	27.2	2.31	28.2	2.03	60°	29.4	1.56	33.0	1.16	34.4	0.95
58°	26.5	2.26	28.5	2.02	29.5	1.93	58°	31.1	1.49	34.5	1.13	35.7	0.94
55°	28.3	1.83	30.3	1.65	31.1	1.59	55°	33.2	1.29	36.5	1.09	37.5	0.93
53°	29.6	1.59	31.4	1.44	32.1	1.40	53°	34.6	1.10	37.8	0.96	38.6	0.90
50°	31.4	1.28	33.1	1.17	33.7	1.14	50°	36.6	0.85	39.4	0.74	40.0	0.71
48°	32.5	1.10	34.1	1.01	34.6	0.99	48°	37.8	0.70	40.5	0.62	41.0	0.59
45°	34.2	0.87	35.6	0.80	35.9	0.79	45°	39.6	0.51	42.1	0.45	42.3	0.44
43°	35.3	0.74	36.6	0.68			43°	40.8	0.41				
40°	36.8	0.57	37.4	0.52									
38°	37.7	0.46	38.8	0.43									

C = Boom angle  
R = Load radius (m)  
W = Rated lifting capacity

# LOAD CHART

## GT-600EX TADANO

## MAIN BOOM + FLY JIB

Outriggers fully extended 7.0m							(UNIT:x1000kg)						
C	35.0m Boom (telescoping mode I) + 8.8m Jib						C	35.0m Boom (telescoping mode I) + 15.2m Jib					
	5° Tilt		25° Tilt		45° Tilt			5° Tilt		25° Tilt		45° Tilt	
	R	W	R	W	R	W		R	W	R	W	R	W
81°	7.3	4.50	10.3	3.58	12.1	2.47	81°	9.2	2.60	14.1	1.69	17.6	1.17
80°	8.1	4.50	11.1	3.50	12.8	2.44	80°	10.1	2.60	15.0	1.65	18.4	1.15
79°	8.9	4.50	11.8	3.42	13.5	2.40	79°	10.9	2.60	15.9	1.61	19.2	1.13
78°	9.7	4.50	12.5	3.35	14.2	2.37	78°	12.0	2.60	16.8	1.58	20.0	1.12
77°	10.5	4.50	13.4	3.28	14.9	2.34	77°	12.9	2.56	17.6	1.54	20.7	1.10
76°	11.3	4.50	14.1	3.21	15.6	2.32	76°	13.8	2.46	18.5	1.51	21.5	1.09
75°	12.1	4.50	14.9	3.15	16.3	2.29	75°	14.7	2.38	19.3	1.48	22.2	1.08
73°	13.6	4.50	16.3	3.04	17.7	2.24	73°	16.5	2.22	20.9	1.43	23.7	1.05
70°	16.0	4.44	18.5	2.89	19.6	2.18	70°	18.9	2.01	23.3	1.35	25.7	1.02
68°	17.4	4.21	19.8	2.80	20.9	2.14	68°	20.6	1.90	24.8	1.31	27.1	1.00
65°	19.5	3.91	21.8	2.69	22.7	2.09	65°	22.9	1.75	27.0	1.25	29.0	0.98
63°	20.8	3.53	23.1	2.62	23.9	2.07	63°	24.5	1.67	28.5	1.21	30.3	0.97
60°	22.6	2.90	25.1	2.53	25.7	2.03	60°	26.8	1.56	30.5	1.16	32.0	0.95
58°	23.9	2.52	26.2	2.27	26.9	2.01	58°	28.3	1.49	31.8	1.13	33.3	0.94
55°	25.6	2.03	27.8	1.85	28.4	1.76	55°	30.4	1.41	33.8	1.09	34.8	0.93
53°	26.8	1.75	28.9	1.61	29.4	1.54	53°	31.7	1.25	34.9	1.06	35.9	0.92
50°	28.4	1.40	30.3	1.29	30.8	1.25	50°	33.5	0.96	36.5	0.82	37.2	0.77
48°	29.5	1.20	31.4	1.11	31.7	1.08	48°	34.7	0.80	37.5	0.68	38.1	0.64
45°	31.0	0.94	32.7	0.88	32.9	0.86	45°	36.4	0.58	38.9	0.50	39.3	0.47
43°	32.0	0.79	33.6	0.74			43°	37.5	0.46				
40°	33.4	0.59	34.8	0.56									
38°	34.3	0.48	35.6	0.45									

C = Boom angle

R = Load radius (m)

W = Rated lifting capacity

# LOAD CHART

## GT-600EX TADANO